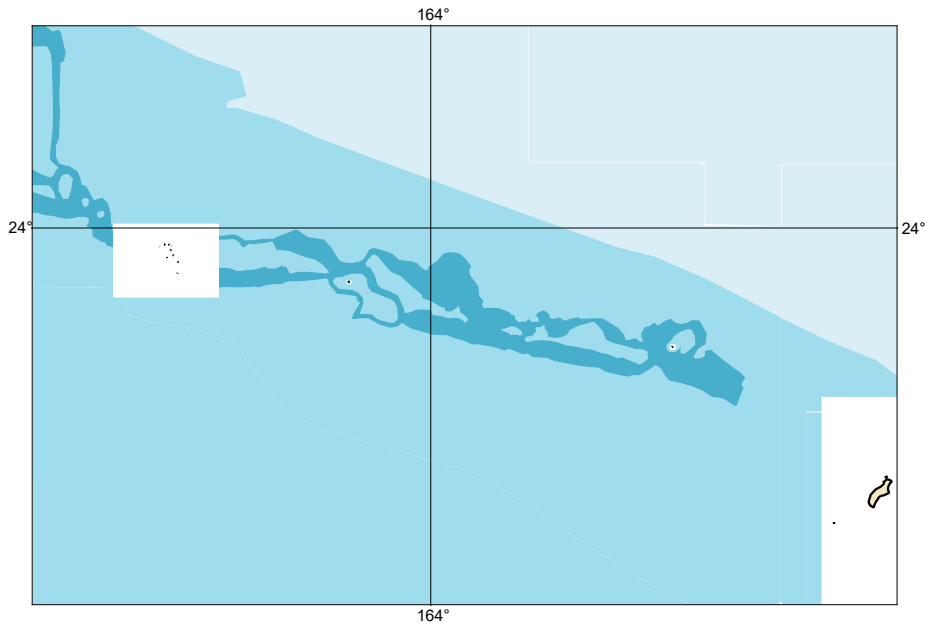


Zone of Confidence (ZOC) Diagram



ZOC CATEGORIES

ZOC	COLOR	POSITION ACCURACY	DEPTH ACCURACY	SEAFLOOR COVERAGE
A1		± 5 m + 5% depth ± 16.4 ft + 5% depth	= 0.50 m +1% d = 1.6 ft +1% d = 0.3 fm +1% d	All significant seafloor features detected.
A2		± 20 m ± 65.6 ft	= 1.00 m +2% d = 3.3 ft +2% d = 0.6 fm +2% d	All significant seafloor features detected.
B		± 50 m ± 164.0 ft	= 1.00 m +2% d = 3.3 ft +2% d = 0.6 fm +2% d	Uncharted features hazardous to surface navigation are not expected but may exist.
C		± 500 m ± 1640.4 ft	= 2.00 m +2% d = 6.6 ft +2% d = 1.1 fm +2% d	Depth anomalies may be expected.
D		Worse than ZOC C	Worse than ZOC C	Large depth anomalies may be expected.
U		Unassessed - The quality of the bathymetric data has yet to be assessed.		

190160G

NOAA CUSTOM CHART
NOTES GEOSPATIAL DATABASE
VERSION 3.0B - 20 FEBRUARY 2025

The records of the NOAA Custom Chart Notes Geospatial Database are current as of February 20, 2025. Subsequent additions and refinements are to be expected. Please refer to all available navigational publications for complete information about the charted area.

CAUTION CHART UPDATES

This NOAA Custom Chart contains up-to-date information only as of the time of creation, and will become outdated. Mariners are advised to visit <https://distribution.charts.noaa.gov/navigation-updates/> to check for critical and routine updates, and to render a new NOAA Custom Chart when the ENC data used to make the chart is updated. Notices to Mariners are not issued for corrections to this NOAA Custom Chart.

AUTHORITIES

Hydrography and topography by the National Ocean Service, Coast Survey, with additional data from the Corps of Engineers, Geological Survey, U.S. Coast Guard and National Geospatial-Intelligence Agency.

COMMENTS REQUESTED

NOAA encourages users to submit inquiries, discrepancies, or comments about this chart via NOAA's ASSIST tool at <https://nauticalcharts.noaa.gov/customer-service/assist/>.

CAUTION AUTOMATED CHART GENERATION

This NOAA Custom Chart has been automatically rendered from NOAA Electronic Navigational Chart (NOAA ENC®) data. Mariners using this NOAA Custom Chart are advised that this is a static reproduction of the NOAA ENC®. This NOAA Custom Chart has not been individually quality checked or adjusted for optimal use for navigation. The portrayal may be at a different scale from that of the original NOAA ENC®. Mariners are advised to use caution when using this NOAA Custom Chart for navigation and are encouraged to use the latest NOAA ENC® to access the most up-to-date information. Mariners must also comply with all applicable regulatory requirements.

HEIGHTS

Heights of fixed aids to navigation and vertical clearances of overhead obstructions will be shown in feet if the units are set to feet or fathoms. If units are set to meters, heights will be shown in meters. Land elevation values are shown in meters only.

WATER LEVELS, CURRENTS, AND TIDES

Real-time water levels, tide predictions, and tidal current predictions are available on the internet from NOAA's Center for Operational Oceanographic Products and Services (CO-OPS) at https://tidesandcurrents.noaa.gov/water_level_info.html and https://tidesandcurrents.noaa.gov/currents_info.html.

ABBREVIATIONS

For complete list of Symbols and Abbreviations, see Chart No. 1.

190160G

POLLUTION REPORTS

Report all spills of oil and hazardous substances to the National Response Center via 1-800-424-8802 (toll free), or to the nearest U.S. Coast Guard facility if telephone communication is impossible (33 CFR 153).

WARNING

The prudent mariner will not rely solely on any single aid to navigation, particularly on floating aids. See U.S. Coast Guard Light List and U.S. Coast Pilot for details.

SUPPLEMENTAL INFORMATION

Consult U.S. Coast Pilot 10 for important supplemental information.

Refer to charted regulation section numbers.

VERTICAL DATUM

Overhead clearances are referred to Mean High Water (MHW).

NOTE

Fish Aggregating Device (FAD) buoys outside 3 NM may have a swing circle radius of up to 3.5 NM from their charted position. Mariners are advised to use caution when transiting in the vicinity of FAD buoys.

FISH AGGREGATING DEVICES

Submarine Fish Aggregating Devices (FADs) are contained within this area at depths of 12.1 to 30.5 meters/40 to 100 feet below the surface. Mariners are advised to use caution when entering and transiting.

AIDS TO NAVIGATION

Consult U.S. Coast Guard Light List for supplemental information concerning aids to navigation.

RADAR REFLECTORS

Radar reflectors have been placed on many floating aids to navigation. Individual radar reflector identification on these aids has been omitted from this chart.

ADDITIONAL INFORMATION

Additional information can be obtained at www.nauticalcharts.noaa.gov

SOUNDING DATUM

Soundings referred to Mean Lower Low Water (MLLW).

NOTE A

Navigation regulations are published in Chapter 2, U.S. Coast Pilot 10. Additions or revisions to Chapter 2 are published in the Notices to Mariners. Information concerning the regulations may be obtained at the Office of the Commander, 14th Coast Guard District in Honolulu, HI or at the Office of the District Engineer, Corps of Engineers in Honolulu, HI.

Refer to charted regulation section numbers.

CAUTION

Temporary changes or defects in aids to navigation are not indicated on this chart. See Local Notice to Mariners.

190160G

CAUTION LIMITATIONS ON THE USE OF RADIO SIGNALS

Limitations on the use of radio signals as aids to marine navigation can be found in the U.S. Coast Guard Light Lists and National Geospatial-Intelligence Agency Publication 117.

Radio direction-finder bearings to commercial broadcasting stations are subject to error and should be used with caution.

DANGER ZONE 33 CFR 334.1340

Navigation regulations are published in Chapter 2, U.S. Coast Pilot 10. Additions or revisions to Chapter 2 are published in Notices to Mariners. Information concerning the regulations may be obtained at the Office of the Commander, 14th Coast Guard District in Honolulu, Hawaii, or at the Office of the District Engineer, Corps of Engineers in Honolulu, Hawaii. Refer to charted regulation section numbers.

PARTICULARLY SENSITIVE SEA AREA

A Particularly Sensitive Sea Area (PSSA) is an environmentally sensitive area around which mariners should exercise extreme caution. See U.S. Coast Pilot volumes for information regarding this area.

NIHOA ISLAND SPECIAL PRESERVATION AREA (PROTECTED AREA: 50 CFR 404; SEE NOTE A)

AREA TO BE AVOIDED

All vessels solely in transit should avoid the area surrounding Papahānaumokuākea Marine National Monument Special Preservation Areas (MSC IMO SN.1 / Circ. 263).

SHIP REPORTING SYSTEM

The following vessels entering or departing any U.S. port or place and in transit through the reporting area are required to report into the System: all vessels 300 gross tons or greater and all vessels in the event of a developing emergency. The following vessels in transit through the reporting area should report into the System: all vessels 300 gross tons or greater, fishing vessels, and all vessels in the event of a developing emergency. See IMO SN. 1, Circ. 273. Information concerning the Ship Reporting System is also published in the U.S. Coast Pilot 10, Chapters 2 and 14, and updated through Notices to Mariners. Information may also be obtained at the Office of the Commander, 14th Coast Guard District in Honolulu or at the Office of the District Engineer, Corps of Engineers, in Honolulu.

FRENCH FRIGATE SHOALS SPECIAL PRESERVATION AREA (PROTECTED AREA: 50 CFR 404; SEE NOTE A)

NECKER ISLAND SPECIAL PRESERVATION AREA (PROTECTED AREA: 50 CFR 404; SEE NOTE A)

PAPAHĀNAUMOKUĀKEA MARINE NATIONAL MONUMENT (PROTECTED AREA: 50 CFR 404)

See Chapter 2, U.S. Coast Pilot 10 for more information about the Papahānaumokuākea Marine National Monument.

190160G

HAWAI'IAN ISLANDS NATIONAL WILDLIFE REFUGE

The Hawai'ian Islands from longitude 161°W to 176°W are part of the Hawai'ian Islands National Wildlife Refuge, and under the jurisdiction of the U.S. Fish and Wildlife Service, Department of the Interior.

The islands and atolls in the refuge include Nihoa, Necker Island, French Frigate Shoals, Gardner Pinnacles, Maro Reef, Laysan Island, Lisianski Island, Pearl and Hermes Atoll. National Wildlife Refuge System regulations pertaining to these islands and atolls are contained in CFR 50, parts 25-32.

Entry to the refuge is strictly prohibited without prior approval from the Refuge Manager, Pacific Remote Islands National Wildlife Refuge Complex, U.S. Fish and Wildlife Service, 300 Ala Moana Blvd Honolulu, Hawaii 96850.

The restrictions apply to all civilian and military agencies as well as individuals.

NOTE

French Frigate Shoals has numerous coral heads, sunken and awash, with deep sink holes, breakers show over entire area.

NOAA WEATHER RADIO BROADCASTS

The NOAA Weather Radio station listed below provides continuous weather broadcasts. The reception range is typically 20 to 40 nautical miles from the antenna site, but can be as much as 100 nautical miles for stations at high elevations.
Kauai, HI WWG-74 162.400 MHz