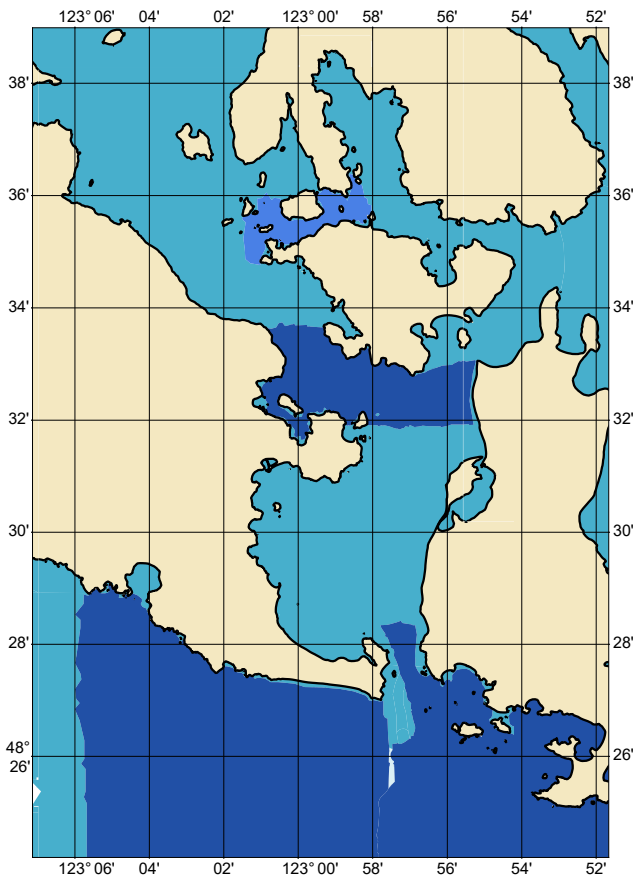


Zone of Confidence (ZOC) Diagram



ZOC CATEGORIES

ZOC	COLOR	POSITION ACCURACY	DEPTH ACCURACY	SEAFLOOR COVERAGE
A1		± 5 m + 5% depth ± 16.4 ft + 5% depth	= 0.50 m +1% d = 1.6 ft +1% d = 0.3 fm +1% d	All significant seafloor features detected.
A2		± 20 m ± 65.6 ft	= 1.00 m +2% d = 3.3 ft +2% d = 0.6 fm +2% d	All significant seafloor features detected.
B		± 50 m ± 164.0 ft	= 1.00 m +2% d = 3.3 ft +2% d = 0.6 fm +2% d	Uncharted features hazardous to surface navigation are not expected but may exist.
C		± 500 m ± 1640.4 ft	= 2.00 m +2% d = 6.6 ft +2% d = 1.1 fm +2% d	Depth anomalies may be expected.
D		Worse than ZOC C	Worse than ZOC C	Large depth anomalies may be expected.
U		Unassessed - The quality of the bathymetric data has yet to be assessed.		

NOAA CUSTOM CHART  
NOTES GEOSPATIAL DATABASE  
VERSION 3.0B - 20 FEBRUARY 2025

The records of the NOAA Custom Chart Notes Geospatial Database are current as of February 20, 2025. Subsequent additions and refinements are to be expected. Please refer to all available navigational publications for complete information about the charted area.

CAUTION  
CHART UPDATES

This NOAA Custom Chart contains up-to-date information only as of the time of creation, and will become outdated. Mariners are advised to visit <https://distribution.charts.noaa.gov/navigation-updates/> to check for critical and routine updates, and to render a new NOAA Custom Chart when the ENC data used to make the chart is updated. Notices to Mariners are not issued for corrections to this NOAA Custom Chart.

AUTHORITIES

Hydrography and topography by the National Ocean Service, Coast Survey, with additional data from the Corps of Engineers, Geological Survey, U.S. Coast Guard and National Geospatial-Intelligence Agency.

COMMENTS REQUESTED

NOAA encourages users to submit inquiries, discrepancies, or comments about this chart via NOAA's ASSIST tool at <https://nauticalcharts.noaa.gov/customer-service/assist/>.

CAUTION  
AUTOMATED CHART GENERATION

This NOAA Custom Chart has been automatically rendered from NOAA Electronic Navigational Chart (NOAA ENC®) data. Mariners using this NOAA Custom Chart are advised that this is a static reproduction of the NOAA ENC®. This NOAA Custom Chart has not been individually quality checked or adjusted for optimal use for navigation. The portrayal may be at a different scale from that of the original NOAA ENC®. Mariners are advised to use caution when using this NOAA Custom Chart for navigation and are encouraged to use the latest NOAA ENC® to access the most up-to-date information. Mariners must also comply with all applicable regulatory requirements.

HEIGHTS

Heights of fixed aids to navigation and vertical clearances of overhead obstructions will be shown in feet if the units are set to feet or fathoms. If units are set to meters, heights will be shown in meters. Land elevation values are shown in meters only.

WATER LEVELS, CURRENTS, AND TIDES

Real-time water levels, tide predictions, and tidal current predictions are available on the internet from NOAA's Center for Operational Oceanographic Products and Services (CO-OPS) at [https://tidesandcurrents.noaa.gov/water\\_level\\_info.html](https://tidesandcurrents.noaa.gov/water_level_info.html) and [https://tidesandcurrents.noaa.gov/currents\\_info.html](https://tidesandcurrents.noaa.gov/currents_info.html).

ABBREVIATIONS

For complete list of Symbols and Abbreviations, see Chart No. 1.

POLLUTION REPORTS

Report all spills of oil and hazardous substances to the National Response Center via 1-800-424-8802 (toll free), or to the nearest U.S. Coast Guard facility if telephone communication is impossible (33 CFR 153).

WARNING

The prudent mariner will not rely solely on any single aid to navigation, particularly on floating aids. See U.S. Coast Guard Light List and U.S. Coast Pilot for details.

SUPPLEMENTAL INFORMATION

Consult U.S. Coast Pilot 10 for important supplemental information.

SOUNDING DATUM

In Canadian waters, soundings are referred to Lowest Normal Tide.

VERTICAL DATUM

In Canadian waters, overhead clearances are referred to Higher High Water Large Tides.

COLREGS, 80.1390 (SEE NOTE A)

International Regulations for Preventing Collisions at Sea, 1972. The entire area of this chart falls seaward of the COLREGS Demarcation Line.

CANADIAN  
AIDS TO NAVIGATION

See Canadian List of Lights, Buoys and Fog Signals for information not included in the U.S. Coast Guard Light List.

AIDS TO NAVIGATION

Consult U.S. Coast Guard Light List for supplemental information concerning aids to navigation.

RADAR REFLECTORS

Radar reflectors have been placed on many floating aids to navigation. Individual radar reflector identification on these aids has been omitted from this chart.

ADDITIONAL INFORMATION

Additional information can be obtained at [www.nauticalcharts.noaa.gov](http://www.nauticalcharts.noaa.gov)

SOUNDING DATUM

Soundings referred to Mean Lower Low Water (MLLW).

VERTICAL DATUM

Overhead clearances are referred to Mean High Water (MHW).

NOTE A

Navigation regulations are published in Chapter 2, U.S. Coast Pilot 10. Additions or revisions to Chapter 2 are published in the Notices to Mariners. Information concerning the regulations may be obtained at the Office of the Commander, 13th Coast Guard District in Seattle, WA or at the Office of the District Engineer, Corps of Engineers in Seattle, WA.

Refer to charted regulation section numbers.

## COPYRIGHT

No copyright is claimed by the United States Government under Title 17 U.S.C. However, other nations may claim intellectual property rights on the compilation of data depicting the foreign waters shown on this chart.

## TRAFFIC SEPARATION SCHEME

One-way traffic lanes are RECOMMENDED for use by all vessels traveling between the points involved. They have been designated to aid in the prevention of collisions in the Strait of Juan De Fuca waters, but are not intended in any way to supersede or alter the applicable Rules of the Road. Separation zones are intended to separate inbound and outbound traffic and to be free of ship traffic. Separation zones should not be used except for crossing purposes. When crossing traffic lanes and separation zones, use extreme caution.

## CAUTION

Temporary changes or defects in aids to navigation are not indicated on this chart. See Local Notice to Mariners.

CAUTION  
LIMITATIONS ON THE  
USE OF RADIO SIGNALS

Limitations on the use of radio signals as aids to marine navigation can be found in the U.S. Coast Guard Light Lists and National Geospatial-Intelligence Agency Publication 117.

Radio direction-finder bearings to commercial broadcasting stations are subject to error and should be used with caution.

## JUAN DE FUCA CVTS

A Cooperative Vessel Traffic Services (CVTS) system has been established by the United States and Canada within the adjoining waters in the Juan de Fuca Region. The appropriate Vessel Traffic Center (VTC) (Prince Rupert Traffic, Seattle Traffic, Victoria Traffic) administers the rules issued by both nations, however it will enforce only its own set of rules within its jurisdiction.

## VESSEL TRAFFIC SERVICES (VTS)

The U.S. Coast Guard operates a mandatory Vessel Traffic Services (VTS) system in U.S. waters. Vessel operating procedures and designated radiotelephone frequencies are published in 33 CFR 161, in the U.S. Coast Pilot, and/or the VTS User's Manual.

## VESSEL TRAFFIC MANAGEMENT AND INFORMATION SYSTEM

For information governing the VESSEL TRAFFIC MANAGEMENT AND INFORMATION SYSTEM for the coastal waters of southern British Columbia, see National Geospatial-Intelligence Agency Publication 154, Sailing Directions (en route) for British Columbia, and the Sailing Directions British Columbia Coast (South Portion) Volume 1, published by the Canadian Hydrographic Service.

CAUTION  
FERRY ROUTES

Mariners are cautioned that ferries may deviate from their published standard routes due to inclement weather, traffic conditions, navigational hazards, or other emergency situations.

CAUTION  
SUBMERGED CABLES AND PIPELINES

Additional uncharted submarine pipelines and submarine cables may exist within the area of this chart. Not all submarine pipelines and submarine cables are required to be buried, and those that were originally buried may have become exposed. Mariners should use extreme caution when operating vessels in depths of water comparable to their draft in areas where pipelines and cables may exist, and when anchoring, dragging or trawling.

Covered wells may be marked by lighted or unlighted buoys.

SPENCER SPIT STATE PARK

NATIONAL WILDLIFE REFUGE  
SAN JUAN AND LOPEZ ISLANDS

The areas are closed to the public to protect breeding colonies of seabirds, endangered and threatened species, and marine mammals. Boaters are requested to stay at least 183 meters/200 yards away from these islands to avoid disturbance to these animals.

NOAA WEATHER RADIO BROADCASTS

The NOAA Weather Radio station listed below provides continuous weather broadcasts. The reception range is typically 20 to 40 nautical miles from the antenna site, but can be as much as 100 nautical miles for stations at high elevations.

H Street - Blaine Area, WA KAD-93  
162.525 MHz

SUBMARINE OPERATIONS

Submerged submarine operations are conducted at various times in the waters contained on this chart. Proceed with caution.

NATIONAL WILDLIFE REFUGE

The islands in the vicinity of Georgia, Haro, and Rosario Straits are part of a National Wildlife Refuge and are closed to the public to protect breeding colonies of seabirds, endangered and threatened species, and marine mammals. Boaters are requested to stay at least 200 yards / 182.8 meters away from these islands to avoid disturbance of these animals.

STRONG CURRENTS

Strong currents may be experienced in the vicinity of Crane Island.

WIRE DRAGGED AREAS

The areas have been swept clear to at least the depths indicated in meters/feet.

NOAA WEATHER RADIO BROADCASTS

The NOAA Weather Radio station listed below provides continuous weather broadcasts. The reception range is typically 20 to 40 nautical miles from the antenna site, but can be as much as 100 nautical miles for stations at high elevations.

Puget Sound Marine, WA WWG-24 162.425  
MHz