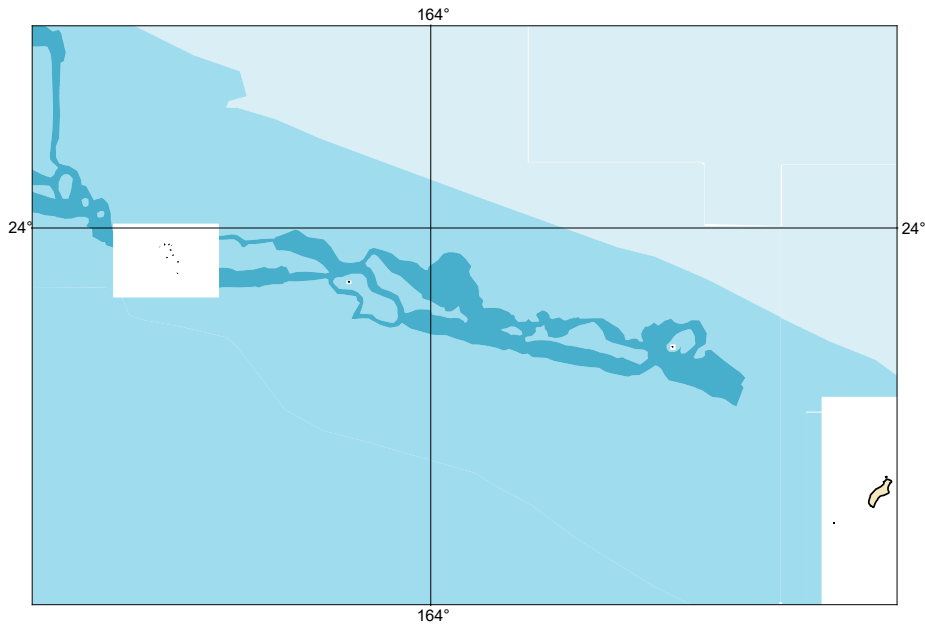


### Zone of Confidence (ZOC) Diagram



#### ZOC CATEGORIES

| ZOC | COLOR | POSITION ACCURACY  | DEPTH ACCURACY                                     | SEAFLOOR COVERAGE  |
|-----|-------|--|--|--|
| A1  |       | ± 5 m + 5% depth<br>± 16.4 ft + 5% depth                                 | = 0.50 m +1% d<br>= 1.6 ft +1% d<br>= 0.3 fm +1% d | All significant seafloor features detected.  |
| A2  |       | ± 20 m<br>± 65.6 ft  | = 1.00 m +2% d<br>= 3.3 ft +2% d<br>= 0.6 fm +2% d | All significant seafloor features detected.  |
| B   |       | ± 50 m<br>± 164.0 ft   | = 1.00 m +2% d<br>= 3.3 ft +2% d<br>= 0.6 fm +2% d | Uncharted features hazardous to surface navigation are not expected but may exist. |
| C   |       | ± 500 m<br>± 1640.4 ft   | = 2.00 m +2% d<br>= 6.6 ft +2% d<br>= 1.1 fm +2% d | Depth anomalies may be expected.   |
| D   |       | Worse than ZOC C   | Worse than ZOC C                                   | Large depth anomalies may be expected.   |
| U   |       | Unassessed - The quality of the bathymetric data has yet to be assessed. |  |  |

# 190160G

NOAA CUSTOM CHART  
NOTES GEOSPATIAL DATABASE  
VERSION 2.0B - 29 MARCH 2024

CAUTION  
AUTOMATED CHART GENERATION

The records of the NOAA Custom Chart Notes Geospatial Database are current as of May 1st, 2023. Subsequent additions and refinements are to be expected. Please refer to all available navigational publications for complete information about the charted area.

## CAUTION CHART UPDATES

This NOAA Custom Chart contains up-to-date information only as of the time of creation, and will become outdated. Mariners are advised to visit [https://distribution.charts.noaa.gov/weekly\\_updates/](https://distribution.charts.noaa.gov/weekly_updates/) to check for weekly updates, and to render a new NOAA Custom Chart when information is updated. Notices to Mariners are not issued for corrections to this NOAA Custom Chart.

## AUTHORITIES

Hydrography and topography by the National Ocean Service, Coast Survey, with additional data from the Corps of Engineers, Geological Survey, U.S. Coast Guard and National Geospatial-Intelligence Agency.

## COMMENTS REQUESTED

NOAA encourages users to submit inquiries, discrepancies, or comments about this chart via NOAA's ASSIST tool at <https://nauticalcharts.noaa.gov/customer-service/assist/>.

This NOAA Custom Chart has been automatically rendered from NOAA Electronic Navigational Chart (NOAA ENC®) data. Mariners using this NOAA Custom Chart are advised that this is a static reproduction of the NOAA ENC®. This NOAA Custom Chart has not been individually quality checked or adjusted for optimal use for navigation. The portrayal may be at a different scale from that of the original NOAA ENC®. Mariners are advised to use caution when using this NOAA Custom Chart for navigation and are encouraged to use the latest NOAA ENC® to access the most up-to-date information. Mariners must also comply with all applicable regulatory requirements.

## HEIGHTS

Heights of fixed aids to navigation and vertical clearances of overhead obstructions will be shown in feet if the units are set to feet or fathoms. If units are set to meters, heights will be shown in meters. Land elevation values are shown in meters only.

## WATER LEVELS, CURRENTS, AND TIDES

Real-time water levels, tide predictions, and tidal current predictions are available on the internet from NOAA's Center for Operational Oceanographic Products and Services (CO-OPS) at [https://tidesandcurrents.noaa.gov/water\\_level\\_info.html](https://tidesandcurrents.noaa.gov/water_level_info.html) and [https://tidesandcurrents.noaa.gov/currents\\_info.html](https://tidesandcurrents.noaa.gov/currents_info.html).

## ABBREVIATIONS

For complete list of Symbols and Abbreviations, see Chart No. 1.

# 190160G

## POLLUTION REPORTS

Report all spills of oil and hazardous substances to the National Response Center via 1-800-424-8802 (toll free), or to the nearest U.S. Coast Guard facility if telephone communication is impossible (33 CFR 153).

### WARNING

The prudent mariner will not rely solely on any single aid to navigation, particularly on floating aids. See U.S. Coast Guard Light List and U.S. Coast Pilot for details.

## SUPPLEMENTAL INFORMATION

Consult U.S. Coast Pilot 10 for important supplemental information.

Refer to charted regulation section numbers.

## VERTICAL DATUM

Overhead clearances are referred to Mean High Water (MHW).

### CAUTION

Temporary changes or defects in aids to navigation are not indicated on this chart. See Local Notice to Mariners.

During some winter months or when endangered by ice, certain aids to navigation are replaced by other types or removed. For details, see U.S. Coast Guard Light List.

## AIDS TO NAVIGATION

Consult U.S. Coast Guard Light List for supplemental information concerning aids to navigation.

## RADAR REFLECTORS

Radar reflectors have been placed on many floating aids to navigation. Individual radar reflector identification on these aids has been omitted from this chart.

## ADDITIONAL INFORMATION

Additional information can be obtained at [www.nauticalcharts.noaa.gov](http://www.nauticalcharts.noaa.gov)

## SOUNDING DATUM

Soundings referred to Mean Lower Low Water (MLLW).

### NOTE A

Navigation regulations are published in Chapter 2, U.S. Coast Pilot 10. Additions or revisions to Chapter 2 are published in the Notices to Mariners. Information concerning the regulations may be obtained at the Office of the Commander, 14th Coast Guard District in Honolulu, HI or at the Office of the District Engineer, Corps of Engineers in Honolulu, HI.

Refer to charted regulation section numbers.

# 190160G

## CAUTION LIMITATIONS ON THE USE OF RADIO SIGNALS

Limitations on the use of radio signals as aids to marine navigation can be found in the U.S. Coast Guard Light Lists and National Geospatial-Intelligence Agency Publication 117.

Radio direction-finder bearings to commercial broadcasting stations are subject to error and should be used with caution.

### AREA TO BE AVOIDED

All vessels solely in transit should avoid the area surrounding Papahānaumokuākea Marine National Monument Special Preservation Areas (MSC IMO SN.1 / Circ. 263).

### SUBMERGED SUBMARINE OPERATING AREAS

Submarines may be submerged in these areas, vessels should proceed with caution. During torpedo practice firing, all vessels are cautioned to keep well clear of Naval Target Vessels flying a large red flag at the highest masthead.

### PARTICULARLY SENSITIVE SEA AREA

A Particularly Sensitive Sea Area (PSSA) is an environmentally sensitive area around which mariners should exercise extreme caution. See U.S. Coast Pilot volumes for information regarding this area.

FRENCH FRIGATE SHOALS  
SPECIAL PRESERVATION AREA(PROTECTED  
AREA: 50 CFR 404; SEE NOTE A)  
NIHOA ISLAND  
SPECIAL PRESERVATION AREA  
(PROTECTED AREA: 50 CFR 404; SEE NOTE  
A)

## CAUTION SUBMERGED CABLES AND PIPELINES

Additional uncharted submarine pipelines and submarine cables may exist within the area of this chart. Not all submarine pipelines and submarine cables are required to be buried, and those that were originally buried may have become exposed. Mariners should use extreme caution when operating vessels in depths of water comparable to their draft in areas where pipelines and cables may exist, and when anchoring, dragging or trawling.

Covered wells may be marked by lighted or unlighted buoys.

### SHIP REPORTING SYSTEM

The following vessels entering or departing any U.S. port or place and in transit through the reporting area are required to report into the System: all vessels 300 gross tons or greater and all vessels in the event of a developing emergency. The following vessels in transit through the reporting area should report into the System: all vessels 300 gross tons or greater, fishing vessels, and all vessels in the event of a developing emergency. See IMO SN. 1, Circ. 273. Information concerning the Ship Reporting System is also published in the U.S. Coast Pilot 10, Chapters 2 and 14, and updated through Notices to Mariners. Information may also be obtained at the Office of the Commander, 14th Coast Guard District in Honolulu or at the Office of the District Engineer, Corps of Engineers, in Honolulu.

NECKER ISLAND  
SPFCIAL PRESERVATION AREA  
(PROTECTED AREA: 50 CFR 404; SEE NOTE  
A)

## 190160G

PAPAHĀNAUMOKUĀKEA  
MARINE NATIONAL MONUMENT  
(PROTECTED AREA: 50 CFR 404)

HAWAI'IAN ISLANDS  
NATIONAL WILDLIFE REFUGE

See Chapter 2, U.S. Coast Pilot 10 for more information about the Papahānaumokuākea Marine National Monument.

### NOTE

French Frigate Shoals has numerous coral heads, sunken and awash, with deep sink holes, breakers show over entire area.

The Hawai'ian Islands from longitude 161°W to 176°W are part of the Hawai'ian Islands National Wildlife Refuge, and under the jurisdiction of the U.S. Fish and Wildlife Service, Department of the Interior.

The islands and atolls in the refuge include Nihoa, Necker Island, French Frigate Shoals, Gardner Pinnacles, Maro Reef, Laysan Island, Lisianski Island, Pearl and Hermes Atoll. National Wildlife Refuge System regulations pertaining to these islands and atolls are contained in CFR 50, parts 25-32.

Entry to the refuge is strictly prohibited without prior approval from the Refuge Manager, Pacific Remote Islands National Wildlife Refuge Complex, U.S. Fish and Wildlife Service, 300 Ala Moana Blvd Honolulu, Hawaii 96850.

The restrictions apply to all civilian and military agencies as well as individuals.